

HAYS UK SALARY & RECRUITING TRENDS 2024 **SALARIES**

CONSTRUCTION
& PROPERTY

hays.co.uk/construction



Construction	3
Health and safety	5
Surveying consultants	6
General practice surveying	9
Architecture	14
Architectural technology	16
Town planning	17
Facilities management	18
Building services	19
Social housing	21

ABOUT HAYS

To help you meet ever-changing customer demands, we bring the people, the technology and the partnership you need to achieve your goals, now and in the future.

As one of the cornerstones of our economy, it is imperative that the construction industry continues to evolve and grow, with projects delivered on time and innovation allowed to flourish. To make this happen, you need the right professionals. We're not only ready to deliver against your immediate hiring needs in construction, but also have the scale, insight and understanding to shape your future workforce management strategy.

Using a customer-first and insight-led approach to meet your business needs, we make it easy for you to deliver against the complex talent and recruitment landscape you need to navigate.







At Hays we're **working for your tomorrow** to help your business succeed.

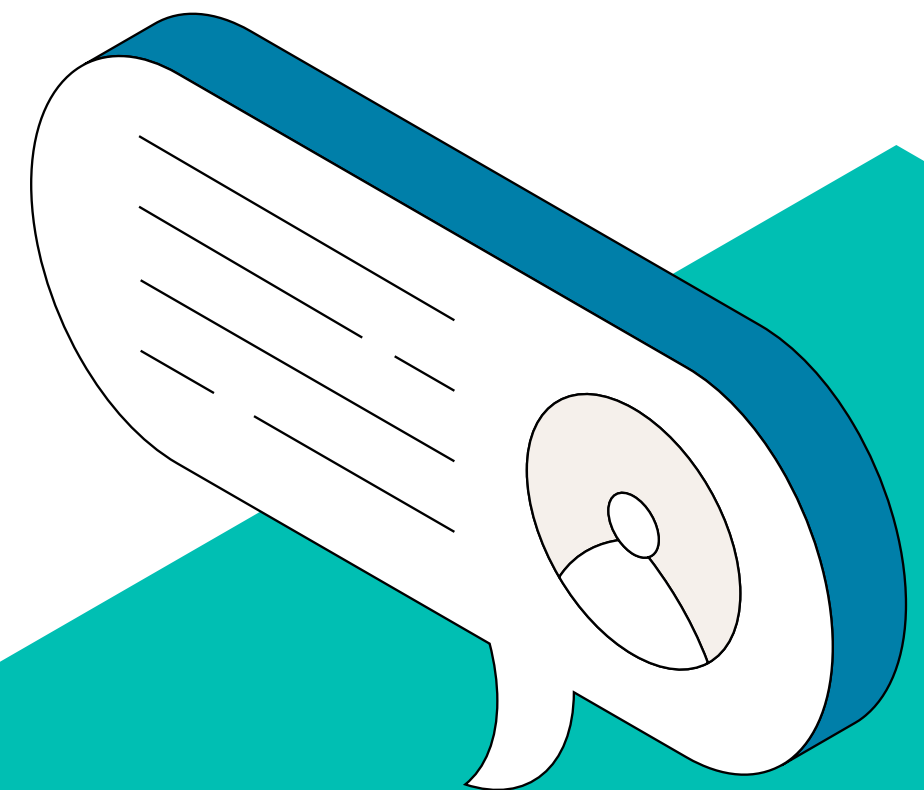
It's not just people we provide – whatever your hiring needs, we're always challenging the status quo, so our suite of services delivers the right outcomes for your organisation.

Find out more about our [Talent](#) and [Workforce Solutions](#)

To speak to your local recruiting expert, find your nearest at hays.co.uk/offices

Stay up-to-date with Hays insight into the world of work.

- | | |
|---|---|
|  Hays |  @Hays_UK |
|  @HaysNews |  Hays UK & Ireland |
|  UKHays |  hays.co.uk/blog |



Methodology

This guide is taken from the Hays UK Salary & Recruiting Trends 2024 guide. The salary data has been compiled using information gathered during 2023 from Hays offices across the UK. It is based on job listings, job offers and candidate registrations.

CONSTRUCTION & PROPERTY

CONSTRUCTION

Operational functions

LONDON		
Site management	£ Range	£ Typical
Senior Site Manager	70,000-85,000	80,000
Site Manager	55,000-70,000	65,000
Assistant Site Manager	40,000-55,000	48,000
General Foreman	38,000-45,000	43,000
Contract and project managers		
Contract Manager	80,000-100,000	90,000
Project Manager	80,000-90,000	87,000
On-site engineering		
Senior Engineer	57,000-67,000	63,000
Engineer	50,000-60,000	56,000

SOUTH EAST ENGLAND		
Site management	£ Range	£ Typical
Senior Site Manager	65,000-75,000	70,000
Site Manager	55,000-65,000	60,000
Assistant Site Manager	30,000-50,000	42,000
General Foreman	25,000-45,000	35,000
Contract and project managers		
Contract Manager	70,000-90,000	80,000
Project Manager	65,000-80,000	75,000
On-site engineering		
Senior Engineer	45,000-60,000	55,000
Engineer	35,000-45,000	45,000

EAST OF ENGLAND		
Site management	£ Range	£ Typical
Senior Site Manager	60,000-70,000	67,000
Site Manager	55,000-65,000	60,000
Assistant Site Manager	40,000-50,000	48,000
General Foreman	35,000-42,000	38,000
Contract and project managers		
Contract Manager	65,000-78,000	74,000
Project Manager	65,000-78,000	74,000
On-site engineering		
Senior Engineer	47,000-59,000	55,000
Engineer	38,000-52,000	45,000

SOUTH WEST ENGLAND		
Site management	£ Range	£ Typical
Senior Site Manager	60,000-70,000	65,000
Site Manager	50,000-65,000	60,000
Assistant Site Manager	40,000-50,000	45,000
General Foreman	32,000-37,000	36,000
Contract and project managers		
Contract Manager	65,000-85,000	75,000
Project Manager	60,000-75,000	72,000
On-site engineering		
Senior Engineer	45,000-55,000	50,000
Engineer	35,000-50,000	45,000

WALES		
Site management	£ Range	£ Typical
Senior Site Manager	56,000-70,000	65,000
Site Manager	50,000-60,000	56,000
Assistant Site Manager	35,000-45,000	38,000
General Foreman	32,000-37,000	35,000
Contract and project managers		
Contract Manager	70,000-80,000	70,000
Project Manager	63,000-78,000	70,000
On-site engineering		
Senior Engineer	45,000-55,000	48,000
Engineer	35,000-50,000	45,000

WEST MIDLANDS		
Site management	£ Range	£ Typical
Senior Site Manager	55,000-70,000	70,000
Site Manager	50,000-60,000	55,000
Assistant Site Manager	35,000-45,000	38,000
General Foreman	35,000-45,000	35,000
Contract and project managers		
Contract Manager	65,000-80,000	70,000
Project Manager	60,000-75,000	70,000
On-site engineering		
Senior Engineer	45,000-55,000	48,000
Engineer	35,000-50,000	42,000

EAST MIDLANDS		
Site management	£ Range	£ Typical
Senior Site Manager	50,000-60,000	55,000
Site Manager	45,000-50,000	48,000
Assistant Site Manager	32,000-40,000	36,000
General Foreman	32,000-42,000	35,000
Contract and project managers		
Contract Manager	58,000-75,000	68,000
Project Manager	55,000-70,000	62,000
On-site engineering		
Senior Engineer	47,000-57,500	52,000
Engineer	33,000-50,000	42,000

YORKSHIRE AND THE HUMBER		
Site management	£ Range	£ Typical
Senior Site Manager	55,000-65,000	58,000
Site Manager	40,000-50,000	48,000
Assistant Site Manager	30,000-40,000	35,000
General Foreman	25,000-35,000	30,000
Contract and project managers		
Contract Manager	55,000-65,000	62,000
Project Manager	55,000-65,000	62,000
On-site engineering		
Senior Engineer	50,000-60,000	53,000
Engineer	30,000-50,000	40,000

NORTH EAST ENGLAND		
Site management	£ Range	£ Typical
Senior Site Manager	55,000-65,000	58,000
Site Manager	45,000-55,000	48,000
Assistant Site Manager	33,000-38,000	35,000
General Foreman	32,000-38,000	36,000
Contract and project managers		
Contract Manager	55,000-70,000	65,000
Project Manager	55,000-70,000	62,000
On-site engineering		
Senior Engineer	45,000-55,000	49,000
Engineer	38,000-50,000	45,000

NORTH WEST ENGLAND		
Site management	£ Range	£ Typical
Senior Site Manager	58,000-62,000	60,000
Site Manager	47,000-52,000	50,000
Assistant Site Manager	38,000-43,000	40,000
General Foreman	35,000-40,000	37,000
Contract and project managers		
Contract Manager	60,000-75,000	67,000
Project Manager	60,000-70,000	62,000
On-site engineering		
Senior Engineer	50,000-65,000	60,000
Engineer	45,000-55,000	50,000

NORTHERN IRELAND		
Site management	£ Range	£ Typical
Senior Site Manager	45,000-63,000	55,000
Site Manager	35,000-55,000	46,000
Assistant Site Manager	26,000-34,000	33,000
General Foreman	31,000-48,000	42,000
Contract and project managers		
Contract Manager	50,000-85,000	68,000
Project Manager	45,000-85,000	63,000
On-site engineering		
Senior Engineer	40,000-50,000	47,000
Engineer	32,000-40,000	36,500

SCOTLAND		
Site management	£ Range	£ Typical
Senior Site Manager	60,000-65,000	60,000
Site Manager	50,000-58,000	55,000
Assistant Site Manager	37,000-46,000	42,000
General Foreman	37,000-44,000	40,000
Contract and project managers		
Contract Manager	55,000-65,000	62,000
Project Manager	65,000-75,000	68,000
On-site engineering		
Senior Engineer	44,000-50,000	47,000
Engineer	40,000-45,000	42,000

CONSTRUCTION & PROPERTY

CONSTRUCTION

Commercial functions

LONDON		
Quantity surveyors	£ Range	£ Typical
Commercial Manager	95,000-135,000	120,000
Senior Quantity Surveyor	80,000-95,000	85,000
Intermediate Quantity Surveyor	60,000-75,000	65,000
Assistant Quantity Surveyor	40,000-50,000	45,000
Estimators	£ Range	£ Typical
Senior Estimator	80,000-99,000	90,000
Estimator	65,000-80,000	75,000
Assistant Estimator	40,000-60,000	55,000

SOUTH EAST ENGLAND		
Quantity surveyors	£ Range	£ Typical
Commercial Manager	85,000-110,000	100,000
Senior Quantity Surveyor	65,000-85,000	75,000
Intermediate Quantity Surveyor	50,000-60,000	55,000
Assistant Quantity Surveyor	28,000-40,000	37,000
Estimators	£ Range	£ Typical
Senior Estimator	65,000-90,000	75,000
Estimator	50,000-70,000	70,000
Assistant Estimator	25,000-45,000	38,000

EAST OF ENGLAND		
Quantity surveyors	£ Range	£ Typical
Commercial Manager	65,000-80,000	75,000
Senior Quantity Surveyor	60,000-75,000	70,000
Intermediate Quantity Surveyor	45,000-60,000	55,000
Assistant Quantity Surveyor	30,000-40,000	38,000
Estimators	£ Range	£ Typical
Senior Estimator	60,000-75,000	67,000
Estimator	45,000-65,000	59,000
Assistant Estimator	30,000-47,000	38,000

SOUTH WEST ENGLAND		
Quantity surveyors	£ Range	£ Typical
Commercial Manager	85,000-90,000	87,000
Senior Quantity Surveyor	60,000-70,000	66,000
Intermediate Quantity Surveyor	50,000-60,000	55,000
Assistant Quantity Surveyor	33,000-40,000	37,000
Estimators	£ Range	£ Typical
Senior Estimator	70,000-80,000	75,000
Estimator	55,000-65,000	60,000
Assistant Estimator	35,000-45,000	40,000

WALES		
Quantity surveyors	£ Range	£ Typical
Commercial Manager	70,000-85,000	80,000
Senior Quantity Surveyor	50,000-70,000	65,000
Intermediate Quantity Surveyor	45,000-55,000	50,000
Assistant Quantity Surveyor	30,000-38,000	35,000
Estimators	£ Range	£ Typical
Senior Estimator	60,000-75,000	70,000
Estimator	45,000-65,000	55,000
Assistant Estimator	30,000-42,000	35,000

WEST MIDLANDS		
Quantity surveyors	£ Range	£ Typical
Commercial Manager	65,000-85,000	75,000
Senior Quantity Surveyor	50,000-70,000	62,000
Intermediate Quantity Surveyor	40,000-45,000	45,000
Assistant Quantity Surveyor	25,000-38,000	30,000
Estimators	£ Range	£ Typical
Senior Estimator	60,000-70,000	70,000
Estimator	45,000-65,000	55,000
Assistant Estimator	25,000-35,000	32,000

EAST MIDLANDS		
Quantity surveyors	£ Range	£ Typical
Commercial Manager	68,000-80,000	75,000
Senior Quantity Surveyor	55,000-75,000	60,000
Intermediate Quantity Surveyor	38,000-50,000	46,000
Assistant Quantity Surveyor	28,000-38,000	34,000
Estimators	£ Range	£ Typical
Senior Estimator	55,000-65,000	65,000
Estimator	44,000-55,000	52,000
Assistant Estimator	28,000-35,000	32,000

YORKSHIRE AND THE HUMBER		
Quantity surveyors	£ Range	£ Typical
Commercial Manager	75,000-85,000	78,000
Senior Quantity Surveyor	55,000-65,000	60,000
Intermediate Quantity Surveyor	40,000-50,000	45,000
Assistant Quantity Surveyor	25,000-35,000	32,000
Estimators	£ Range	£ Typical
Senior Estimator	60,000-70,000	65,000
Estimator	40,000-55,000	48,000
Assistant Estimator	25,000-35,000	30,000

NORTH EAST ENGLAND		
Quantity surveyors	£ Range	£ Typical
Commercial Manager	70,000-80,000	75,000
Senior Quantity Surveyor	56,000-75,000	60,000
Intermediate Quantity Surveyor	39,000-44,000	43,000
Assistant Quantity Surveyor	25,000-38,000	33,000
Estimators	£ Range	£ Typical
Senior Estimator	55,000-70,000	65,000
Estimator	50,000-58,000	55,000
Assistant Estimator	30,000-35,000	32,000

NORTH WEST ENGLAND		
Quantity surveyors	£ Range	£ Typical
Commercial Manager	70,000-80,000	75,000
Senior Quantity Surveyor	60,000-70,000	62,000
Intermediate Quantity Surveyor	50,000-60,000	55,000
Assistant Quantity Surveyor	38,000-40,000	38,000
Estimators	£ Range	£ Typical
Senior Estimator	65,000-70,000	67,000
Estimator	50,000-65,000	58,000
Assistant Estimator	35,000-45,000	40,000

NORTHERN IRELAND		
Quantity surveyors	£ Range	£ Typical
Commercial Manager	70,000-80,000	75,000
Senior Quantity Surveyor	55,000-65,000	60,000
Intermediate Quantity Surveyor	40,000-55,000	47,000
Assistant Quantity Surveyor	32,000-40,000	38,500
Estimators	£ Range	£ Typical
Senior Estimator	55,000-65,000	62,500
Estimator	45,000-55,000	53,000
Assistant Estimator	35,000-45,000	40,000

SCOTLAND		
Quantity surveyors	£ Range	£ Typical
Commercial Manager	68,000-77,000	72,000
Senior Quantity Surveyor	60,000-70,000	65,000
Intermediate Quantity Surveyor	45,000-60,000	52,000
Assistant Quantity Surveyor	35,000-42,000	40,000
Estimators	£ Range	£ Typical
Senior Estimator	65,000-80,000	70,000
Estimator	45,000-55,000	52,000
Assistant Estimator	35,000-45,000	40,000

HEALTH & SAFETY

LONDON	£ Range	£ Typical
H&S Director	90,000-140,000	120,000
Senior H&S Manager	65,000-85,000	75,000
H&S Manager	52,000-65,000	63,000
H&S Advisor	36,000-50,000	48,000
H&S Coordinator	25,000-35,000	33,000
CDM Coordinator/Principal Designer	50,000-65,000	65,000

SOUTH EAST ENGLAND	£ Range	£ Typical
H&S Director	85,000-130,000	105,000
Senior H&S Manager	60,000-80,000	70,000
H&S Manager	45,000-65,000	60,000
H&S Advisor	36,000-50,000	48,000
H&S Coordinator	25,000-35,000	33,000
CDM Coordinator/Principal Designer	50,000-60,000	60,000

EAST OF ENGLAND	£ Range	£ Typical
H&S Director	70,000-90,000	85,000
Senior H&S Manager	50,000-70,000	65,000
H&S Manager	45,000-58,000	55,000
H&S Advisor	35,000-48,000	45,000
H&S Coordinator	25,000-35,000	33,000
CDM Coordinator/Principal Designer	48,000-60,000	55,000

SOUTH WEST ENGLAND	£ Range	£ Typical
H&S Director	75,000-88,000	85,000
Senior H&S Manager	55,000-70,000	65,000
H&S Manager	45,000-58,000	55,000
H&S Advisor	38,000-48,000	45,000
H&S Coordinator	25,000-35,000	33,000
CDM Coordinator/Principal Designer	48,000-60,000	50,000

WALES	£ Range	£ Typical
H&S Director	65,000-83,000	77,000
Senior H&S Manager	55,000-65,000	58,000
H&S Manager	40,000-53,000	48,000
H&S Advisor	30,000-40,000	35,000
H&S Coordinator	23,000-30,000	27,000
CDM Coordinator/Principal Designer	42,000-53,000	48,000

WEST MIDLANDS	£ Range	£ Typical
H&S Director	85,000-125,000	100,000
Senior H&S Manager	55,000-65,000	62,000
H&S Manager	45,000-55,000	53,000
H&S Advisor	35,000-45,000	42,000
H&S Coordinator	25,000-35,000	32,000
CDM Coordinator/Principal Designer	45,000-55,000	55,000

EAST MIDLANDS	£ Range	£ Typical
H&S Director	85,000-125,000	100,000
Senior H&S Manager	55,000-65,000	60,000
H&S Manager	45,000-55,000	50,000
H&S Advisor	35,000-45,000	42,000
H&S Coordinator	25,000-35,000	32,000
CDM Coordinator/Principal Designer	45,000-55,000	55,000

YORKSHIRE AND THE HUMBER	£ Range	£ Typical
H&S Director	85,000-110,000	100,000
Senior H&S Manager	55,000-65,000	60,000
H&S Manager	45,000-55,000	50,000
H&S Advisor	35,000-45,000	40,000
H&S Coordinator	25,000-35,000	30,000
CDM Coordinator/Principal Designer	45,000-55,000	50,000

NORTH EAST ENGLAND	£ Range	£ Typical
H&S Director	70,000-80,000	75,000
Senior H&S Manager	45,000-58,000	55,000
H&S Manager	40,000-50,000	45,000
H&S Advisor	26,000-36,000	34,000
H&S Coordinator	22,000-30,000	28,000
CDM Coordinator/Principal Designer	37,000-47,000	45,000

NORTH WEST ENGLAND	£ Range	£ Typical
H&S Director	75,000-90,000	85,000
Senior H&S Manager	55,000-65,000	60,000
H&S Manager	45,000-55,000	52,000
H&S Advisor	38,000-45,000	42,000
H&S Coordinator	28,000-35,000	31,000
CDM Coordinator/Principal Designer	50,000-55,000	52,000

NORTHERN IRELAND	£ Range	£ Typical
H&S Director	55,000-70,000	62,000
Senior H&S Manager	48,000-65,000	55,000
H&S Manager	40,000-55,000	46,000
H&S Advisor	30,000-45,000	36,000
H&S Coordinator	22,000-28,000	25,000
CDM Coordinator/Principal Designer	30,000-40,000	35,000

SCOTLAND	£ Range	£ Typical
H&S Director	49,000-57,000	55,500
Senior H&S Manager	42,000-49,000	48,000
H&S Manager	36,000-44,000	43,000
H&S Advisor	28,500-34,000	33,000
H&S Coordinator	19,500-25,000	24,000
CDM Coordinator/Principal Designer	46,000-61,000	52,000

SURVEYING CONSULTANTS

Professional quantity surveyors

LONDON	£ Range	£ Typical
Partner/Director	100,000-130,000	120,000
Associate	70,000-85,000	80,000
Senior Surveyor	55,000-65,000	64,000
Newly Qualified Surveyor	42,000-50,000	47,000
Graduate Surveyor	26,000-37,000	32,000

SOUTH EAST ENGLAND	£ Range	£ Typical
Partner/Director	80,000-100,000	95,000
Associate	65,000-75,000	72,000
Senior Surveyor	55,000-65,000	60,000
Newly Qualified Surveyor	42,000-50,000	47,000
Graduate Surveyor	24,000-29,000	27,000

EAST OF ENGLAND	£ Range	£ Typical
Partner/Director	80,000-100,000	90,000
Associate	60,000-80,000	75,000
Senior Surveyor	45,000-60,000	55,000
Newly Qualified Surveyor	38,000-45,000	43,000
Graduate Surveyor	25,000-32,000	26,000

SOUTH WEST ENGLAND	£ Range	£ Typical
Partner/Director	75,000-80,000	75,000
Associate	58,000-75,000	70,000
Senior Surveyor	54,000-58,000	55,000
Newly Qualified Surveyor	40,000-45,000	43,000
Graduate Surveyor	27,000-34,000	28,000

WALES	£ Range	£ Typical
Partner/Director	70,000-80,000	74,500
Associate	50,000-70,000	65,000
Senior Surveyor	45,000-55,000	53,500
Newly Qualified Surveyor	37,500-42,500	42,000
Graduate Surveyor	25,000-30,000	27,000

WEST MIDLANDS	£ Range	£ Typical
Partner/Director	70,000-85,000	78,000
Associate	62,500-75,000	67,000
Senior Surveyor	50,000-60,000	58,000
Newly Qualified Surveyor	38,000-50,000	45,000
Graduate Surveyor	25,000-32,000	28,000

EAST MIDLANDS	£ Range	£ Typical
Partner/Director	70,000-80,000	75,000
Associate	65,000-70,000	67,000
Senior Surveyor	50,000-60,000	55,000
Newly Qualified Surveyor	38,000-50,000	45,000
Graduate Surveyor	25,000-28,000	27,000

YORKSHIRE AND THE HUMBER	£ Range	£ Typical
Partner/Director	65,000-80,000	72,000
Associate	55,000-65,000	60,000
Senior Surveyor	45,000-55,000	50,000
Newly Qualified Surveyor	30,000-40,000	37,500
Graduate Surveyor	24,000-29,000	27,000

NORTH EAST ENGLAND	£ Range	£ Typical
Partner/Director	65,000-80,000	72,000
Associate	55,000-65,000	60,000
Senior Surveyor	45,000-55,000	50,000
Newly Qualified Surveyor	30,000-40,000	37,500
Graduate Surveyor	24,000-29,000	27,000

NORTH WEST ENGLAND	£ Range	£ Typical
Partner/Director	75,000-85,000	80,000
Associate	65,000-70,000	67,000
Senior Surveyor	45,000-55,000	49,000
Newly Qualified Surveyor	38,000-48,000	42,000
Graduate Surveyor	25,000-28,000	27,000

NORTHERN IRELAND	£ Range	£ Typical
Partner/Director	70,000-80,000	75,000
Associate	50,000-65,000	57,500
Senior Surveyor	40,000-55,000	48,000
Newly Qualified Surveyor	30,000-40,000	36,500
Graduate Surveyor	22,000-28,000	25,000

SCOTLAND	£ Range	£ Typical
Partner/Director	70,000-87,000	83,000
Associate	60,000-72,000	68,000
Senior Surveyor	50,000-62,000	58,000
Newly Qualified Surveyor	38,000-45,000	42,000
Graduate Surveyor	26,500-30,000	27,000

SURVEYING CONSULTANTS

Building surveyors

LONDON	£ Range	£ Typical
Partner/Director	100,000-130,000	120,000
Associate	70,000-85,000	80,000
Senior Surveyor	55,000-65,000	64,000
Newly Qualified Building Surveyor	42,000-50,000	47,000
Graduate Building Surveyor	26,000-37,000	32,000
Maintenance Surveyor	45,000-65,000	55,000

SOUTH EAST ENGLAND	£ Range	£ Typical
Partner/Director	75,000-90,000	85,000
Associate	65,000-75,000	70,000
Senior Surveyor	55,000-65,000	56,000
Newly Qualified Building Surveyor	38,000-45,000	43,000
Graduate Building Surveyor	24,000-28,000	25,000
Maintenance Surveyor	35,000-45,000	38,000

EAST OF ENGLAND	£ Range	£ Typical
Partner/Director	80,000-100,000	90,000
Associate	55,000-80,000	70,000
Senior Surveyor	45,000-55,000	50,000
Newly Qualified Building Surveyor	35,000-45,000	42,000
Graduate Building Surveyor	25,000-30,000	27,000
Maintenance Surveyor	30,000-48,000	40,000

SOUTH WEST ENGLAND	£ Range	£ Typical
Partner/Director	69,000-85,000	80,000
Associate	55,000-68,000	68,000
Senior Surveyor	45,000-55,000	52,000
Newly Qualified Building Surveyor	32,000-45,000	40,000
Graduate Building Surveyor	26,000-32,000	27,500
Maintenance Surveyor	34,000-38,000	37,000

WALES	£ Range	£ Typical
Partner/Director	70,000-75,000	72,000
Associate	60,000-70,000	65,000
Senior Surveyor	40,500-55,000	48,000
Newly Qualified Building Surveyor	31,500-35,000	33,000
Graduate Building Surveyor	25,000-32,000	26,000
Maintenance Surveyor	32,000-37,000	36,000

WEST MIDLANDS	£ Range	£ Typical
Partner/Director	70,000-80,000	75,000
Associate	60,000-72,000	65,000
Senior Surveyor	45,000-65,000	55,000
Newly Qualified Building Surveyor	35,000-42,000	37,000
Graduate Building Surveyor	25,000-32,000	28,000
Maintenance Surveyor	30,000-45,000	40,000

EAST MIDLANDS	£ Range	£ Typical
Partner/Director	70,000-80,000	75,000
Associate	60,000-70,000	65,000
Senior Surveyor	45,000-65,000	55,000
Newly Qualified Building Surveyor	30,000-40,000	36,000
Graduate Building Surveyor	25,000-28,000	26,000
Maintenance Surveyor	30,000-40,000	38,000

YORKSHIRE AND THE HUMBER	£ Range	£ Typical
Partner/Director	65,000-80,000	75,000
Associate	55,000-65,000	62,500
Senior Surveyor	40,000-55,000	50,000
Newly Qualified Building Surveyor	30,000-40,000	37,500
Graduate Building Surveyor	24,000-30,000	26,000
Maintenance Surveyor	32,000-40,000	34,000

NORTH EAST ENGLAND	£ Range	£ Typical
Partner/Director	65,000-80,000	75,000
Associate	55,000-65,000	62,500
Senior Surveyor	40,000-55,000	50,000
Newly Qualified Building Surveyor	30,000-40,000	37,500
Graduate Building Surveyor	24,000-30,000	26,000
Maintenance Surveyor	32,000-40,000	34,000

NORTH WEST ENGLAND	£ Range	£ Typical
Partner/Director	70,000-90,000	85,000
Associate	60,000-75,000	65,000
Senior Surveyor	45,000-52,000	48,000
Newly Qualified Building Surveyor	38,000-46,000	42,000
Graduate Building Surveyor	25,000-32,000	28,000
Maintenance Surveyor	32,000-45,000	40,000

NORTHERN IRELAND	£ Range	£ Typical
Partner/Director	60,000-70,000	65,000
Associate	45,000-60,000	52,000
Senior Surveyor	35,000-42,500	40,000
Newly Qualified Building Surveyor	30,000-40,000	35,000
Graduate Building Surveyor	21,000-26,000	22,000
Maintenance Surveyor	25,000-33,000	30,000

SCOTLAND	£ Range	£ Typical
Partner/Director	65,000-85,000	74,000
Associate	60,000-65,000	61,000
Senior Surveyor	45,000-60,000	47,500
Newly Qualified Building Surveyor	36,000-48,000	39,000
Graduate Building Surveyor	25,000-29,000	27,500
Maintenance Surveyor	28,000-36,000	31,000

SURVEYING CONSULTANTS

Project managers

LONDON	£ Range	£ Typical
Partner/Director	100,000-130,000	120,000
Associate	70,000-85,000	80,000
Senior Surveyor	60,000-75,000	68,000
Newly Qualified Surveyor	42,000-55,000	50,000
APC Surveyor	26,000-37,000	36,000
Graduate	25,000-30,000	28,000

WALES	£ Range	£ Typical
Partner/Director	75,000-85,000	80,000
Associate	60,000-70,000	68,000
Senior Surveyor	45,000-65,000	51,000
Newly Qualified Surveyor	38,000-45,000	40,000
APC Surveyor	29,000-40,000	30,000
Graduate	25,000-35,000	28,000

NORTH EAST ENGLAND	£ Range	£ Typical
Partner/Director	65,000-80,000	75,000
Associate	55,000-68,000	62,500
Senior Surveyor	42,000-52,000	48,000
Newly Qualified Surveyor	30,000-40,000	37,000
APC Surveyor	25,000-32,000	28,000
Graduate	22,000-28,000	25,000

SOUTH EAST ENGLAND	£ Range	£ Typical
Partner/Director	80,000-100,000	90,000
Associate	70,000-80,000	75,000
Senior Surveyor	60,000-70,000	65,000
Newly Qualified Surveyor	45,000-55,000	50,000
APC Surveyor	30,000-40,000	35,000
Graduate	24,000-28,000	25,000

WEST MIDLANDS	£ Range	£ Typical
Partner/Director	75,000-85,000	80,000
Associate	55,000-70,000	70,000
Senior Surveyor	45,000-55,000	50,000
Newly Qualified Surveyor	35,000-40,000	40,000
APC Surveyor	26,000-32,000	30,000
Graduate	25,000-30,000	26,000

NORTH WEST ENGLAND	£ Range	£ Typical
Partner/Director	75,000-88,000	86,000
Associate	65,000-70,000	67,000
Senior Surveyor	45,000-55,000	49,000
Newly Qualified Surveyor	38,000-48,000	42,000
APC Surveyor	25,000-30,000	28,500
Graduate	25,000-30,000	26,000

EAST OF ENGLAND	£ Range	£ Typical
Partner/Director	70,000-100,000	80,000
Associate	60,000-70,000	65,000
Senior Surveyor	50,000-60,000	55,000
Newly Qualified Surveyor	35,000-45,000	40,000
APC Surveyor	28,000-35,000	31,000
Graduate	25,000-30,000	27,000

EAST MIDLANDS	£ Range	£ Typical
Partner/Director	65,000-75,000	70,000
Associate	55,000-65,000	60,000
Senior Surveyor	45,000-55,000	50,000
Newly Qualified Surveyor	30,000-45,000	37,000
APC Surveyor	25,000-30,000	28,000
Graduate	23,000-28,000	25,000

NORTHERN IRELAND	£ Range	£ Typical
Partner/Director	70,000-80,000	75,000
Associate	55,000-65,000	62,000
Senior Surveyor	42,000-52,000	48,500
Newly Qualified Surveyor	32,000-40,000	36,500
APC Surveyor	27,500-32,000	30,000
Graduate	22,000-28,000	25,000

SOUTH WEST ENGLAND	£ Range	£ Typical
Partner/Director	75,000-85,000	80,000
Associate	60,000-70,000	68,000
Senior Surveyor	45,000-65,000	51,000
Newly Qualified Surveyor	38,000-45,000	40,000
APC Surveyor	29,000-40,000	30,000
Graduate	25,000-35,000	28,000

YORKSHIRE AND THE HUMBER	£ Range	£ Typical
Partner/Director	65,000-80,000	75,000
Associate	55,000-68,000	62,500
Senior Surveyor	42,000-52,000	48,000
Newly Qualified Surveyor	30,000-40,000	37,000
APC Surveyor	25,000-32,000	28,000
Graduate	22,000-28,000	25,000

SCOTLAND	£ Range	£ Typical
Partner/Director	78,000-100,000	81,000
Associate	65,000-72,000	71,000
Senior Surveyor	45,000-60,000	56,000
Newly Qualified Surveyor	36,000-48,000	46,000
APC Surveyor	28,000-38,000	36,000
Graduate	24,000-28,000	26,000

GENERAL PRACTICE SURVEYING

General practice surveyors

LONDON	£ Range	£ Typical
Partner/Director	100,000-130,000	120,000
Associate	70,000-85,000	80,000
Senior Surveyor	55,000-65,000	64,000
Newly Qualified Surveyor	42,000-50,000	47,000
Graduate Surveyor	26,000-37,000	32,000

SOUTH EAST ENGLAND	£ Range	£ Typical
Partner/Director	71,000-88,000	82,000
Associate	60,000-68,000	65,000
Senior Surveyor	50,000-60,000	55,000
Newly Qualified Surveyor	38,000-43,000	40,000
Graduate Surveyor	23,000-26,000	24,500

EAST OF ENGLAND	£ Range	£ Typical
Partner/Director	70,000-90,000	75,000
Associate	55,000-75,000	62,000
Senior Surveyor	45,000-55,000	50,000
Newly Qualified Surveyor	35,000-45,000	42,000
Graduate Surveyor	25,000-30,000	27,000

SOUTH WEST ENGLAND	£ Range	£ Typical
Partner/Director	70,000-85,000	80,000
Associate	60,000-75,000	67,000
Senior Surveyor	45,000-55,000	50,000
Newly Qualified Surveyor	25,000-45,000	42,000
Graduate Surveyor	25,000-30,000	29,000

WALES	£ Range	£ Typical
Partner/Director	70,000-85,000	80,000
Associate	60,000-75,000	67,000
Senior Surveyor	36,000-49,000	47,000
Newly Qualified Surveyor	33,000-42,000	39,500
Graduate Surveyor	24,000-30,000	27,500

WEST MIDLANDS	£ Range	£ Typical
Partner/Director	65,000-75,000	70,000
Associate	60,000-70,000	60,000
Senior Surveyor	45,000-55,000	50,000
Newly Qualified Surveyor	35,000-45,000	40,000
Graduate Surveyor	25,000-30,000	28,000

EAST MIDLANDS	£ Range	£ Typical
Partner/Director	60,000-70,000	65,000
Associate	50,000-60,000	55,000
Senior Surveyor	40,000-50,000	45,000
Newly Qualified Surveyor	30,000-40,000	38,000
Graduate Surveyor	22,000-30,000	26,000

YORKSHIRE AND THE HUMBER	£ Range	£ Typical
Partner/Director	70,000-80,000	75,000
Associate	50,000-60,000	55,000
Senior Surveyor	40,000-50,000	45,000
Newly Qualified Surveyor	30,000-40,000	35,000
Graduate Surveyor	22,000-28,000	25,000

NORTH EAST ENGLAND	£ Range	£ Typical
Partner/Director	70,000-80,000	75,000
Associate	50,000-60,000	55,000
Senior Surveyor	40,000-50,000	45,000
Newly Qualified Surveyor	30,000-40,000	35,000
Graduate Surveyor	22,000-28,000	25,000

NORTH WEST ENGLAND	£ Range	£ Typical
Partner/Director	75,000-87,000	82,000
Associate	60,000-70,000	60,000
Senior Surveyor	45,000-55,000	50,000
Newly Qualified Surveyor	35,000-45,000	40,000
Graduate Surveyor	25,000-30,000	28,000

NORTHERN IRELAND	£ Range	£ Typical
Partner/Director	60,000-75,000	70,000
Associate	45,000-55,000	53,000
Senior Surveyor	38,000-44,000	42,000
Newly Qualified Surveyor	27,000-37,000	35,000
Graduate Surveyor	19,000-24,000	21,000

SCOTLAND	£ Range	£ Typical
Partner/Director	55,000-78,000	74,000
Associate	47,000-54,000	53,500
Senior Surveyor	40,000-48,500	46,500
Newly Qualified Surveyor	30,000-38,500	35,500
Graduate Surveyor	22,000-27,000	25,500

GENERAL PRACTICE SURVEYING

Property managers

LONDON	£ Range	£ Typical
Partner/Director	100,000-130,000	120,000
Associate	70,000-85,000	80,000
Senior Surveyor	55,000-65,000	64,000
Newly Qualified Surveyor	42,000-50,000	47,000
Graduate Surveyor	26,000-37,000	32,000

SOUTH EAST ENGLAND	£ Range	£ Typical
Partner/Director	70,000-85,000	74,000
Associate	60,000-65,000	62,000
Senior Surveyor	50,000-60,000	55,000
Newly Qualified Surveyor	38,000-43,000	40,000
Graduate Surveyor	23,000-26,000	24,500

EAST OF ENGLAND	£ Range	£ Typical
Partner/Director	65,000-85,000	72,000
Associate	55,000-65,000	58,000
Senior Surveyor	40,000-55,000	50,000
Newly Qualified Surveyor	35,000-40,000	38,000
Graduate Surveyor	25,000-28,000	26,000

SOUTH WEST ENGLAND	£ Range	£ Typical
Partner/Director	65,000-85,000	75,000
Associate	55,000-70,000	60,000
Senior Surveyor	45,000-55,000	53,000
Newly Qualified Surveyor	35,000-45,000	38,000
Graduate Surveyor	25,000-32,000	26,000

WALES	£ Range	£ Typical
Partner/Director	62,000-72,000	71,000
Associate	57,000-67,000	64,000
Senior Surveyor	45,000-55,000	53,000
Newly Qualified Surveyor	30,000-40,000	37,000
Graduate Surveyor	22,000-28,000	25,500

WEST MIDLANDS	£ Range	£ Typical
Partner/Director	65,000-75,000	70,000
Associate	60,000-70,000	65,000
Senior Surveyor	47,000-60,000	55,000
Newly Qualified Surveyor	35,000-42,000	40,000
Graduate Surveyor	25,000-32,000	28,000

EAST MIDLANDS	£ Range	£ Typical
Partner/Director	65,000-75,000	70,000
Associate	60,000-70,000	65,000
Senior Surveyor	47,000-60,000	55,000
Newly Qualified Surveyor	35,000-42,000	40,000
Graduate Surveyor	25,000-32,000	28,000

YORKSHIRE AND THE HUMBER	£ Range	£ Typical
Partner/Director	65,000-80,000	75,000
Associate	48,000-60,000	52,500
Senior Surveyor	40,000-50,000	48,000
Newly Qualified Surveyor	30,000-40,000	35,000
Graduate Surveyor	24,000-29,000	26,000

NORTH EAST ENGLAND	£ Range	£ Typical
Partner/Director	65,000-80,000	75,000
Associate	48,000-60,000	53,000
Senior Surveyor	40,000-50,000	48,000
Newly Qualified Surveyor	30,000-40,000	34,000
Graduate Surveyor	24,000-29,000	26,000

NORTH WEST ENGLAND	£ Range	£ Typical
Partner/Director	65,000-85,000	78,000
Associate	60,000-70,000	65,000
Senior Surveyor	47,000-60,000	55,000
Newly Qualified Surveyor	35,000-42,000	40,000
Graduate Surveyor	25,000-32,000	28,000

NORTHERN IRELAND	£ Range	£ Typical
Partner/Director	57,000-75,000	73,000
Associate	45,000-55,000	52,000
Senior Surveyor	36,000-43,000	41,500
Newly Qualified Surveyor	26,000-36,000	33,500
Graduate Surveyor	18,500-22,500	21,000

SCOTLAND	£ Range	£ Typical
Partner/Director	62,000-75,000	71,000
Associate	52,000-63,000	56,000
Senior Surveyor	38,000-47,000	43,000
Newly Qualified Surveyor	30,000-42,000	33,500
Graduate Surveyor	22,000-27,500	25,500

GENERAL PRACTICE SURVEYING

Commercial surveyors

LONDON	£ Range	£ Typical
Partner/Director	100,000-130,000	120,000
Associate	70,000-85,000	80,000
Senior Surveyor	55,000-65,000	64,000
Newly Qualified Surveyor	42,000-50,000	47,000
Graduate Surveyor	26,000-37,000	32,000

WALES	£ Range	£ Typical
Partner/Director	65,000-75,000	69,000
Associate	51,000-61,000	57,000
Senior Surveyor	41,000-51,000	47,000
Newly Qualified Surveyor	29,000-39,000	37,000
Graduate Surveyor	24,000-29,000	26,000

NORTH EAST ENGLAND	£ Range	£ Typical
Partner/Director	65,000-80,000	72,500
Associate	48,000-60,000	55,000
Senior Surveyor	40,000-50,000	45,000
Newly Qualified Surveyor	31,000-40,000	35,000
Graduate Surveyor	24,000-29,000	26,000

SOUTH EAST ENGLAND	£ Range	£ Typical
Partner/Director	65,000-85,000	72,000
Associate	55,000-65,000	60,000
Senior Surveyor	50,000-60,000	54,000
Newly Qualified Surveyor	38,000-43,000	40,000
Graduate Surveyor	22,000-26,000	24,000

WEST MIDLANDS	£ Range	£ Typical
Partner/Director	60,000-70,000	65,000
Associate	55,000-63,000	58,000
Senior Surveyor	45,000-55,000	50,000
Newly Qualified Surveyor	35,000-42,000	39,000
Graduate Surveyor	25,000-30,000	28,000

NORTH WEST ENGLAND	£ Range	£ Typical
Partner/Director	65,000-85,000	82,000
Associate	55,000-63,000	60,000
Senior Surveyor	45,000-55,000	50,000
Newly Qualified Surveyor	35,000-42,000	40,000
Graduate Surveyor	25,000-30,000	28,000

EAST OF ENGLAND	£ Range	£ Typical
Partner/Director	65,000-85,000	72,000
Associate	55,000-65,000	60,000
Senior Surveyor	45,000-55,000	50,000
Newly Qualified Surveyor	32,000-45,000	38,000
Graduate Surveyor	25,000-30,000	26,000

EAST MIDLANDS	£ Range	£ Typical
Partner/Director	60,000-65,000	62,000
Associate	50,000-60,000	55,000
Senior Surveyor	40,000-50,000	48,000
Newly Qualified Surveyor	28,000-40,000	35,000
Graduate Surveyor	22,000-28,000	26,000

NORTHERN IRELAND	£ Range	£ Typical
Partner/Director	66,000-76,000	74,000
Associate	46,000-56,000	54,500
Senior Surveyor	36,000-42,000	40,000
Newly Qualified Surveyor	27,000-36,000	34,000
Graduate Surveyor	18,500-22,500	21,500

SOUTH WEST ENGLAND	£ Range	£ Typical
Partner/Director	70,000-85,000	76,000
Associate	55,000-70,000	61,000
Senior Surveyor	45,000-60,000	50,000
Newly Qualified Surveyor	28,000-45,000	38,000
Graduate Surveyor	27,000-31,000	27,000

YORKSHIRE AND THE HUMBER	£ Range	£ Typical
Partner/Director	65,000-80,000	72,500
Associate	48,000-60,000	55,000
Senior Surveyor	40,000-50,000	45,000
Newly Qualified Surveyor	31,000-40,000	35,000
Graduate Surveyor	24,000-29,000	26,000

SCOTLAND	£ Range	£ Typical
Partner/Director	65,000-85,000	72,000
Associate	50,000-60,000	57,000
Senior Surveyor	38,000-48,000	43,000
Newly Qualified Surveyor	32,000-40,000	33,000
Graduate Surveyor	25,000-30,000	26,000

GENERAL PRACTICE SURVEYING

Development surveyors

LONDON	£ Range	£ Typical
Partner/Director	100,000-130,000	120,000
Associate	70,000-85,000	80,000
Senior Surveyor	55,000-65,000	64,000
Newly Qualified Surveyor	42,000-50,000	47,000
Graduate Surveyor	26,000-37,000	32,000

WALES	£ Range	£ Typical
Partner/Director	62,000-75,000	72,000
Associate	52,000-62,000	58,000
Senior Surveyor	40,000-52,000	49,000
Newly Qualified Surveyor	30,000-40,000	35,000
Graduate Surveyor	25,000-30,000	28,000

NORTH EAST ENGLAND	£ Range	£ Typical
Partner/Director	70,000-80,000	75,000
Associate	50,000-70,000	60,000
Senior Surveyor	42,000-60,000	50,000
Newly Qualified Surveyor	35,000-40,000	36,500
Graduate Surveyor	24,000-29,000	25,000

SOUTH EAST ENGLAND	£ Range	£ Typical
Partner/Director	75,000-90,000	86,000
Associate	60,000-65,000	62,000
Senior Surveyor	55,000-60,000	58,000
Newly Qualified Surveyor	40,000-45,000	42,000
Graduate Surveyor	23,000-25,500	24,500

WEST MIDLANDS	£ Range	£ Typical
Partner/Director	75,000-120,000	92,000
Associate	62,000-72,000	70,000
Senior Surveyor	50,000-60,000	50,000
Newly Qualified Surveyor	35,000-45,000	42,000
Graduate Surveyor	25,000-30,000	28,000

NORTH WEST ENGLAND	£ Range	£ Typical
Partner/Director	72,000-100,000	89,000
Associate	62,000-72,000	70,000
Senior Surveyor	50,000-60,000	50,000
Newly Qualified Surveyor	35,000-45,000	40,000
Graduate Surveyor	25,000-30,000	28,000

EAST OF ENGLAND	£ Range	£ Typical
Partner/Director	80,000-110,000	90,000
Associate	60,000-80,000	70,000
Senior Surveyor	48,000-60,000	56,500
Newly Qualified Surveyor	35,000-42,000	40,000
Graduate Surveyor	25,000-30,000	28,000

EAST MIDLANDS	£ Range	£ Typical
Partner/Director	70,000-80,000	78,000
Associate	60,000-70,000	70,000
Senior Surveyor	50,000-60,000	50,000
Newly Qualified Surveyor	30,000-40,000	38,000
Graduate Surveyor	25,000-30,000	27,000

NORTHERN IRELAND	£ Range	£ Typical
Partner/Director	60,000-75,000	72,500
Associate	47,000-57,000	54,000
Senior Surveyor	36,000-45,000	42,500
Newly Qualified Surveyor	27,000-35,000	31,500
Graduate Surveyor	18,500-22,000	20,500

SOUTH WEST ENGLAND	£ Range	£ Typical
Partner/Director	70,000-85,000	80,000
Associate	58,000-70,000	68,000
Senior Surveyor	47,000-60,000	50,000
Newly Qualified Surveyor	35,000-48,000	40,000
Graduate Surveyor	25,000-30,000	26,000

YORKSHIRE AND THE HUMBER	£ Range	£ Typical
Partner/Director	70,000-80,000	75,000
Associate	50,000-70,000	60,000
Senior Surveyor	42,000-60,000	50,000
Newly Qualified Surveyor	35,000-40,000	36,500
Graduate Surveyor	24,000-29,000	25,000

SCOTLAND	£ Range	£ Typical
Partner/Director	68,000-78,000	74,500
Associate	50,000-68,000	53,000
Senior Surveyor	40,000-52,000	43,000
Newly Qualified Surveyor	30,000-46,000	32,000
Graduate Surveyor	23,500-29,500	24,500

GENERAL PRACTICE SURVEYING

Valuation surveyors

LONDON	£ Range	£ Typical
Partner/Director	100,000-130,000	120,000
Associate	70,000-85,000	80,000
Senior Surveyor	55,000-65,000	64,000
Newly Qualified Surveyor	42,000-50,000	47,000
APC Surveyor	26,000-37,000	32,000
Graduate Surveyor	26,000-29,000	28,500

WALES	£ Range	£ Typical
Partner/Director	69,000-79,000	77,500
Associate	58,000-68,000	66,000
Senior Surveyor	45,000-57,000	48,500
Newly Qualified Surveyor	33,000-40,000	37,000
APC Surveyor	24,000-32,000	29,000
Graduate Surveyor	19,000-28,000	27,000

NORTH EAST ENGLAND	£ Range	£ Typical
Partner/Director	65,000-80,000	75,000
Associate	50,000-65,000	57,500
Senior Surveyor	45,000-55,000	48,000
Newly Qualified Surveyor	33,000-45,000	37,000
APC Surveyor	25,000-33,000	28,000
Graduate Surveyor	24,000-29,000	25,000

SOUTH EAST ENGLAND	£ Range	£ Typical
Partner/Director	80,000-90,000	85,000
Associate	65,000-70,000	70,000
Senior Surveyor	50,000-60,000	55,000
Newly Qualified Surveyor	40,000-45,000	43,000
APC Surveyor	30,000-36,000	35,000
Graduate Surveyor	23,000-26,000	24,500

WEST MIDLANDS	£ Range	£ Typical
Partner/Director	70,000-80,000	73,000
Associate	60,000-70,000	66,000
Senior Surveyor	45,000-52,000	50,000
Newly Qualified Surveyor	35,000-43,000	40,000
APC Surveyor	25,000-30,000	29,000
Graduate Surveyor	24,000-28,000	26,000

NORTH WEST ENGLAND	£ Range	£ Typical
Partner/Director	70,000-85,000	80,000
Associate	60,000-70,000	66,000
Senior Surveyor	45,000-52,000	50,000
Newly Qualified Surveyor	35,000-43,000	40,000
APC Surveyor	25,000-30,000	29,000
Graduate Surveyor	24,000-28,000	26,000

EAST OF ENGLAND	£ Range	£ Typical
Partner/Director	70,000-90,000	75,000
Associate	60,000-70,000	65,000
Senior Surveyor	45,000-60,000	55,000
Newly Qualified Surveyor	35,000-45,000	40,000
APC Surveyor	28,000-35,000	32,000
Graduate Surveyor	25,000-30,000	28,000

EAST MIDLANDS	£ Range	£ Typical
Partner/Director	70,000-75,000	70,000
Associate	60,000-70,000	65,000
Senior Surveyor	40,000-50,000	48,000
Newly Qualified Surveyor	30,000-40,000	35,000
APC Surveyor	25,000-30,000	28,000
Graduate Surveyor	20,000-25,000	25,000

NORTHERN IRELAND	£ Range	£ Typical
Partner/Director	60,000-75,000	72,000
Associate	45,000-55,000	51,500
Senior Surveyor	36,000-45,000	41,500
Newly Qualified Surveyor	27,000-35,000	33,000
APC Surveyor	22,000-28,000	27,000
Graduate Surveyor	18,000-22,000	20,500

SOUTH WEST ENGLAND	£ Range	£ Typical
Partner/Director	70,000-85,000	78,000
Associate	60,000-70,000	67,000
Senior Surveyor	45,000-60,000	52,000
Newly Qualified Surveyor	35,000-45,000	41,000
APC Surveyor	28,000-35,000	31,000
Graduate Surveyor	24,000-30,000	27,000

YORKSHIRE AND THE HUMBER	£ Range	£ Typical
Partner/Director	65,000-80,000	75,000
Associate	50,000-65,000	57,500
Senior Surveyor	45,000-55,000	48,000
Newly Qualified Surveyor	33,000-45,000	37,000
APC Surveyor	25,000-33,000	28,000
Graduate Surveyor	24,000-29,000	25,000

SCOTLAND	£ Range	£ Typical
Partner/Director	62,000-75,000	68,000
Associate	52,000-60,000	57,500
Senior Surveyor	42,000-49,000	47,000
Newly Qualified Surveyor	32,000-40,000	37,000
APC Surveyor	25,000-32,000	28,000
Graduate Surveyor	23,000-27,000	26,000

CONSTRUCTION & PROPERTY ARCHITECTURE

LONDON		
Architects	£ Range	£ Typical
Partner/Director	75,000-120,000	92,500
Associate	60,000-70,000	67,500
Architect (Senior)	52,500-65,000	58,000
Architect (5 years PQE)	47,500-52,500	50,000
Architect (Recently Qualified)	37,500-45,000	43,000
Architectural Assistant, Part II	30,000-34,000	33,500
Architectural Assistant, Part I	21,000-27,000	25,000

BIM	£ Range	£ Typical
BIM Manager	57,500-67,500	65,000
BIM Coordinator	38,000-48,000	44,000

Interior designers	£ Range	£ Typical
Interior Designer (Senior)	48,000-56,000	52,000
Interior Designer (Midweight)	40,000-45,000	44,000
Interior Designer (Junior)	23,000-26,000	25,000
Spaceplanner	30,000-40,000	33,000

Design Manager	£ Range	£ Typical
Design Manager	70,000-90,000	80,000
Design Coordinator	42,500-55,000	50,000

SOUTH EAST ENGLAND		
Architects	£ Range	£ Typical
Partner/Director	65,000-80,000	72,000
Associate	50,000-65,000	55,000
Architect (Senior)	46,000-57,500	52,000
Architect (5 years PQE)	40,000-50,000	46,000
Architect (Recently Qualified)	33,000-40,000	37,500
Architectural Assistant, Part II	28,000-35,000	31,000
Architectural Assistant, Part I	20,000-25,000	23,500

BIM	£ Range	£ Typical
BIM Manager	46,000-60,000	55,000
BIM Coordinator	40,000-50,000	45,000

Interior designers	£ Range	£ Typical
Interior Designer (Senior)	37,000-47,000	45,000
Interior Designer (Midweight)	31,000-38,000	36,000
Interior Designer (Junior)	19,000-25,000	23,000
Spaceplanner	29,000-37,500	34,000

Design Manager	£ Range	£ Typical
Design Manager	55,000-65,000	60,000
Design Coordinator	45,000-55,000	52,000

EAST OF ENGLAND		
Architects	£ Range	£ Typical
Partner/Director	65,000-80,000	72,000
Associate	50,000-65,000	55,000
Architect (Senior)	46,000-56,000	51,000
Architect (5 years PQE)	42,000-52,000	47,500
Architect (Recently Qualified)	33,000-40,000	37,500
Architectural Assistant, Part II	27,500-35,000	31,000
Architectural Assistant, Part I	20,000-25,500	24,000

BIM	£ Range	£ Typical
BIM Manager	47,000-60,000	55,000
BIM Coordinator	40,000-50,000	45,000

Interior designers	£ Range	£ Typical
Interior Designer (Senior)	38,000-48,000	47,000
Interior Designer (Midweight)	30,000-37,000	35,000
Interior Designer (Junior)	19,000-25,000	24,000
Spaceplanner	27,500-37,500	30,000

Design Manager	£ Range	£ Typical
Design Manager	55,000-67,500	65,000
Design Coordinator	45,000-55,000	49,000

SOUTH WEST ENGLAND		
Architects	£ Range	£ Typical
Partner/Director	62,000-72,000	69,000
Associate	46,000-56,000	52,500
Architect (Senior)	37,500-52,500	48,000
Architect (5 years PQE)	37,500-47,500	45,000
Architect (Recently Qualified)	30,000-40,000	37,500
Architectural Assistant, Part II	27,500-32,500	30,000
Architectural Assistant, Part I	19,000-27,500	23,500

BIM	£ Range	£ Typical
BIM Manager	47,500-58,000	55,000
BIM Coordinator	35,000-42,500	40,000

Interior designers	£ Range	£ Typical
Interior Designer (Senior)	35,000-45,000	39,000
Interior Designer (Midweight)	29,000-35,000	30,500
Interior Designer (Junior)	19,000-25,500	23,500
Spaceplanner	31,000-40,000	34,000

Design Manager	£ Range	£ Typical
Design Manager	53,000-70,000	63,000
Design Coordinator	45,000-55,000	50,000

WALES		
Architects	£ Range	£ Typical
Partner/Director	60,000-70,000	68,500
Associate	45,000-55,000	51,000
Architect (Senior)	36,000-50,000	46,000
Architect (5 years PQE)	37,000-47,000	44,000
Architect (Recently Qualified)	27,000-37,000	35,500
Architectural Assistant, Part II	25,000-30,000	28,500
Architectural Assistant, Part I	18,000-25,000	22,500

BIM	£ Range	£ Typical
BIM Manager	45,000-55,000	53,000
BIM Coordinator	32,000-40,000	36,500

Interior designers	£ Range	£ Typical
Interior Designer (Senior)	33,000-43,000	38,000
Interior Designer (Midweight)	28,000-33,000	29,500
Interior Designer (Junior)	18,000-25,000	22,500
Spaceplanner	30,000-37,000	32,500

Design Manager	£ Range	£ Typical
Design Manager	50,000-65,000	61,000
Design Coordinator	41,000-50,000	48,500

WEST MIDLANDS		
Architects	£ Range	£ Typical
Partner/Director	60,000-70,000	67,000
Associate	45,000-55,000	52,000
Architect (Senior)	36,000-50,000	46,000
Architect (5 years PQE)	35,000-45,000	45,000
Architect (Recently Qualified)	27,000-36,000	37,000
Architectural Assistant, Part II	25,000-30,000	28,000
Architectural Assistant, Part I	18,000-25,000	22,000

BIM	£ Range	£ Typical
BIM Manager	45,000-55,000	52,000
BIM Coordinator	32,000-40,000	36,000

Interior designers	£ Range	£ Typical
Interior Designer (Senior)	35,000-46,000	43,000
Interior Designer (Midweight)	25,000-33,000	31,000
Interior Designer (Junior)	18,000-25,000	23,000
Spaceplanner	20,000-28,000	28,000

Design Manager	£ Range	£ Typical
Design Manager	50,000-65,000	60,000
Design Coordinator	41,000-50,000	48,000

EAST MIDLANDS		
Architects	£ Range	£ Typical
Partner/Director	60,000-70,000	68,000
Associate	45,000-55,000	52,000
Architect (Senior)	36,000-50,000	45,000
Architect (5 years PQE)	35,000-45,000	43,000
Architect (Recently Qualified)	27,000-36,000	35,000
Architectural Assistant, Part II	25,000-30,000	28,000
Architectural Assistant, Part I	18,000-25,000	22,000

BIM	£ Range	£ Typical
BIM Manager	45,000-55,000	52,000
BIM Coordinator	32,000-40,000	36,000

Interior designers	£ Range	£ Typical
Interior Designer (Senior)	35,000-46,000	42,000
Interior Designer (Midweight)	25,000-33,000	30,000
Interior Designer (Junior)	18,000-25,000	22,000
Spaceplanner	20,000-28,000	27,000

Design Manager	£ Range	£ Typical
Design Manager	50,000-65,000	60,000
Design Coordinator	41,000-50,000	48,000

YORKSHIRE AND THE HUMBER		
Architects	£ Range	£ Typical
Partner/Director	65,000-90,000	88,000
Associate	46,000-60,000	54,000
Architect (Senior)	39,000-53,000	48,000
Architect (5 years PQE)	35,000-45,000	39,500
Architect (Recently Qualified)	30,000-37,000	33,500
Architectural Assistant, Part II	27,000-33,000	31,250
Architectural Assistant, Part I	19,000-25,000	23,000

BIM	£ Range	£ Typical
BIM Manager	45,000-60,000	54,000
BIM Coordinator	35,000-45,000	41,250

Interior designers	£ Range	£ Typical
Interior Designer (Senior)	39,000-57,000	46,000
Interior Designer (Midweight)	29,000-38,000	32,000
Interior Designer (Junior)	18,000-26,000	24,000
Spaceplanner	23,000-38,000	29,500

Design Manager	£ Range	£ Typical
Design Manager	45,000-70,000	65,000
Design Coordinator	39,000-50,000	45,000

CONSTRUCTION & PROPERTY ARCHITECTURE

NORTH EAST ENGLAND		
Architects	£ Range	£ Typical
Partner/Director	60,000-80,000	74,000
Associate	45,000-59,000	50,000
Architect (Senior)	40,000-52,000	46,000
Architect (5 years PQE)	35,000-45,000	38,000
Architect (Recently Qualified)	30,000-36,000	32,500
Architectural Assistant, Part II	26,000-32,000	27,500
Architectural Assistant, Part I	19,000-25,000	23,000
BIM		
BIM Manager	£ Range	£ Typical
BIM Manager	45,000-60,000	51,000
BIM Coordinator	35,000-45,000	40,000
Interior designers		
Interior Designer (Senior)	£ Range	£ Typical
Interior Designer (Senior)	38,000-55,000	44,000
Interior Designer (Midweight)	28,000-36,000	33,000
Interior Designer (Junior)	18,000-25,000	23,000
Spaceplanner	20,000-35,000	27,500
Design Manager		
Design Manager	£ Range	£ Typical
Design Manager	45,000-70,000	63,000
Design Coordinator	39,000-51,000	46,000

NORTH WEST ENGLAND		
Architects	£ Range	£ Typical
Partner/Director	65,000-90,000	80,000
Associate	45,000-62,000	55,000
Architect (Senior)	40,000-55,000	47,500
Architect (5 years PQE)	37,000-47,000	43,000
Architect (Recently Qualified)	31,000-37,000	35,500
Architectural Assistant, Part II	27,000-34,000	29,750
Architectural Assistant, Part I	22,000-25,000	24,000
BIM		
BIM Manager	£ Range	£ Typical
BIM Manager	45,000-60,000	55,000
BIM Coordinator	38,000-47,000	44,000
Interior designers		
Interior Designer (Senior)	£ Range	£ Typical
Interior Designer (Senior)	38,000-57,500	46,000
Interior Designer (Midweight)	30,000-40,000	33,500
Interior Designer (Junior)	22,000-30,000	25,200
Spaceplanner	24,000-39,500	31,500
Design Manager		
Design Manager	£ Range	£ Typical
Design Manager	45,000-70,000	65,000
Design Coordinator	40,000-55,000	47,000

NORTHERN IRELAND		
Architects	£ Range	£ Typical
Partner/Director	52,000-65,500	55,000
Associate	45,000-50,000	46,000
Architect (Senior)	40,000-46,000	45,000
Architect (5 years PQE)	35,000-45,000	38,500
Architect (Recently Qualified)	28,000-36,000	32,000
Architectural Assistant, Part II	23,000-26,000	24,000
Architectural Assistant, Part I	18,000-23,000	21,000
BIM		
BIM Manager	£ Range	£ Typical
BIM Manager	42,000-52,000	47,000
BIM Coordinator	28,000-42,000	35,000
Interior designers		
Interior Designer (Senior)	£ Range	£ Typical
Interior Designer (Senior)	30,000-37,000	35,000
Interior Designer (Midweight)	25,000-30,000	28,000
Interior Designer (Junior)	20,000-25,000	23,000
Spaceplanner	18,000-22,000	20,000
Design Manager		
Design Manager	£ Range	£ Typical
Design Manager	46,000-65,000	55,000
Design Coordinator	30,000-45,000	40,000

SCOTLAND		
Architects	£ Range	£ Typical
Partner/Director	55,000-95,000	76,500
Associate	42,000-55,000	51,000
Architect (Senior)	38,000-48,000	44,500
Architect (5 years PQE)	35,000-42,000	39,000
Architect (Recently Qualified)	28,000-34,000	33,000
Architectural Assistant, Part II	20,000-28,000	25,500
Architectural Assistant, Part I	18,000-20,000	18,500
BIM		
BIM Manager	£ Range	£ Typical
BIM Manager	45,000-55,000	51,000
BIM Coordinator	35,000-45,000	40,500
Interior designers		
Interior Designer (Senior)	£ Range	£ Typical
Interior Designer (Senior)	34,000-42,000	39,000
Interior Designer (Midweight)	26,000-34,000	31,500
Interior Designer (Junior)	18,000-26,000	22,500
Spaceplanner	20,000-35,000	30,500
Design Manager		
Design Manager	£ Range	£ Typical
Design Manager	47,000-65,000	61,000
Design Coordinator	37,000-47,000	46,000

ARCHITECTURAL TECHNOLOGY

LONDON	£ Range	£ Typical
Partner/Director	75,000-120,000	93,000
Associate	60,000-70,000	65,000
Senior Technologist	50,000-57,500	55,500
Technologist	40,000-50,000	46,000
Technologist (Recently Qualified)	30,000-37,500	36,000

SOUTH EAST ENGLAND	£ Range	£ Typical
Partner/Director	60,000-80,000	70,000
Associate	50,000-60,000	55,000
Senior Technologist	45,000-55,000	51,000
Technologist	38,000-48,000	43,000
Technologist (Recently Qualified)	28,000-35,000	34,000

EAST OF ENGLAND	£ Range	£ Typical
Partner/Director	60,000-80,000	70,000
Associate	50,000-60,000	55,000
Senior Technologist	45,000-55,000	51,000
Technologist	38,000-48,000	43,000
Technologist (Recently Qualified)	28,000-35,000	33,500

SOUTH WEST ENGLAND	£ Range	£ Typical
Partner/Director	45,000-50,000	47,000
Associate	41,000-46,000	44,000
Senior Technologist	34,000-41,000	38,500
Technologist	25,000-34,000	30,500
Technologist (Recently Qualified)	18,500-25,500	23,000

WALES	£ Range	£ Typical
Partner/Director	46,000-50,000	48,000
Associate	41,000-47,000	43,000
Senior Technologist	37,000-45,000	39,500
Technologist	26,000-36,000	29,000
Technologist (Recently Qualified)	18,500-24,000	23,000

WEST MIDLANDS	£ Range	£ Typical
Partner/Director	60,000-70,000	62,000
Associate	45,000-60,000	50,000
Senior Technologist	35,000-45,000	40,000
Technologist	25,000-35,000	33,000
Technologist (Recently Qualified)	22,000-25,000	23,000

EAST MIDLANDS	£ Range	£ Typical
Partner/Director	60,000-70,000	62,000
Associate	45,000-60,000	50,000
Senior Technologist	35,000-45,000	40,000
Technologist	25,000-35,000	33,000
Technologist (Recently Qualified)	22,000-25,000	23,000

YORKSHIRE AND THE HUMBER	£ Range	£ Typical
Partner/Director	60,000-80,000	73,000
Associate	45,000-55,000	52,000
Senior Technologist	35,000-50,000	48,000
Technologist	24,000-37,000	35,000
Technologist (Recently Qualified)	20,000-25,000	22,500

NORTH EAST ENGLAND	£ Range	£ Typical
Partner/Director	60,000-80,000	72,000
Associate	45,000-55,000	52,000
Senior Technologist	35,000-50,000	47,000
Technologist	24,000-38,000	33,500
Technologist (Recently Qualified)	22,000-26,000	23,000

NORTH WEST ENGLAND	£ Range	£ Typical
Partner/Director	60,000-80,000	75,000
Associate	45,000-55,000	52,000
Senior Technologist	35,000-50,000	48,000
Technologist	24,000-38,000	35,000
Technologist (Recently Qualified)	22,000-26,000	24,000

NORTHERN IRELAND	£ Range	£ Typical
Partner/Director	45,000-55,000	47,000
Associate	38,000-46,000	43,000
Senior Technologist	35,000-45,000	40,000
Technologist	26,000-36,000	28,500
Technologist (Recently Qualified)	22,000-27,000	25,000

SCOTLAND	£ Range	£ Typical
Partner/Director	60,000-75,000	65,500
Associate	45,000-55,000	50,500
Senior Technologist	36,000-46,000	44,500
Technologist	26,000-36,000	34,500
Technologist (Recently Qualified)	18,000-26,000	24,500

TOWN PLANNING

LONDON	£ Range	£ Typical
Partner/Director	80,000-100,000	90,000
Associate	50,000-72,000	65,000
Planner	35,000-50,000	45,000
Assistant Planner	25,000-32,000	30,000

SOUTH EAST ENGLAND	£ Range	£ Typical
Partner/Director	65,000-90,000	77,000
Associate	45,000-65,000	55,000
Planner	30,000-45,000	38,000
Assistant Planner	22,000-30,000	25,000

EAST OF ENGLAND	£ Range	£ Typical
Partner/Director	65,000-85,000	77,000
Associate	50,000-70,000	65,000
Planner	30,000-45,000	42,000
Assistant Planner	22,000-30,000	28,000

SOUTH WEST ENGLAND	£ Range	£ Typical
Partner/Director	55,000-80,000	60,000
Associate	40,000-55,000	50,000
Planner	28,000-40,000	39,000
Assistant Planner	25,000-30,000	26,000

WALES	£ Range	£ Typical
Partner/Director	55,000-78,000	59,000
Associate	40,000-55,000	50,000
Planner	26,000-38,000	36,000
Assistant Planner	21,000-27,000	23,000

WEST MIDLANDS	£ Range	£ Typical
Partner/Director	55,000-65,000	62,000
Associate	45,000-51,000	47,000
Planner	28,000-36,000	34,000
Assistant Planner	18,000-25,000	23,000

EAST MIDLANDS	£ Range	£ Typical
Partner/Director	55,000-65,000	62,000
Associate	45,000-51,000	47,000
Planner	28,000-36,000	34,000
Assistant Planner	18,000-25,000	23,000

YORKSHIRE AND THE HUMBER	£ Range	£ Typical
Partner/Director	55,000-80,000	65,000
Associate	40,000-55,000	50,000
Planner	28,000-38,000	33,000
Assistant Planner	25,000-30,000	26,000

NORTH EAST ENGLAND	£ Range	£ Typical
Partner/Director	55,000-80,000	65,000
Associate	40,000-55,000	50,000
Planner	28,000-38,000	33,000
Assistant Planner	25,000-30,000	26,000

NORTH WEST ENGLAND	£ Range	£ Typical
Partner/Director	55,000-80,000	70,000
Associate	40,000-55,000	50,000
Planner	28,000-40,000	38,000
Assistant Planner	25,000-30,000	26,000

NORTHERN IRELAND	£ Range	£ Typical
Partner/Director	42,000-52,000	49,500
Associate	36,000-43,000	40,500
Planner	26,000-38,000	33,500
Assistant Planner	19,000-24,000	22,500

SCOTLAND	£ Range	£ Typical
Partner/Director	50,000-60,000	55,500
Associate	40,000-50,000	45,500
Planner	30,000-40,000	35,500
Assistant Planner	20,000-30,000	25,500

FACILITIES MANAGEMENT

LONDON	£ Range	£ Typical
Facilities Director	90,000-125,000	110,000
Facilities Manager	50,000-65,000	60,000
Facilities Assistant	28,000-35,000	32,000
Technical Services Manager	60,000-70,000	65,000
Technical Services Supervisor	42,000-52,000	49,000
Contract Manager	60,000-70,000	65,000
Electrical/Mechanical Engineer	38,000-48,000	45,000

WALES	£ Range	£ Typical
Facilities Director	61,000-80,000	70,000
Facilities Manager	40,000-45,000	45,000
Facilities Assistant	23,000-27,000	24,000
Technical Services Manager	38,000-45,000	43,000
Technical Services Supervisor	32,000-38,000	36,000
Contract Manager	43,000-48,000	46,000
Electrical/Mechanical Engineer	33,000-36,000	36,000

NORTH EAST ENGLAND	£ Range	£ Typical
Facilities Director	55,000-76,000	68,000
Facilities Manager	34,000-45,000	41,000
Facilities Assistant	22,000-26,000	25,000
Technical Services Manager	40,000-44,000	44,000
Technical Services Supervisor	36,000-38,000	37,000
Contract Manager	40,000-50,000	48,500
Electrical/Mechanical Engineer	30,000-40,000	40,000

SOUTH EAST ENGLAND	£ Range	£ Typical
Facilities Director	75,000-85,000	82,000
Facilities Manager	43,000-49,000	45,000
Facilities Assistant	25,000-33,000	30,000
Technical Services Manager	52,000-62,000	60,000
Technical Services Supervisor	38,000-47,000	45,000
Contract Manager	55,000-65,000	60,000
Electrical/Mechanical Engineer	35,000-45,000	40,000

WEST MIDLANDS	£ Range	£ Typical
Facilities Director	75,000-100,000	82,000
Facilities Manager	43,000-65,000	55,000
Facilities Assistant	25,000-38,000	30,000
Technical Services Manager	52,000-62,000	60,000
Technical Services Supervisor	38,000-47,000	45,000
Contract Manager	55,000-65,000	60,000
Electrical/Mechanical Engineer	35,000-45,000	40,000

NORTH WEST ENGLAND	£ Range	£ Typical
Facilities Director	75,000-100,000	82,000
Facilities Manager	43,000-65,000	55,000
Facilities Assistant	25,000-38,000	30,000
Technical Services Manager	52,000-62,000	60,000
Technical Services Supervisor	38,000-47,000	45,000
Contract Manager	55,000-65,000	60,000
Electrical/Mechanical Engineer	35,000-45,000	40,000

EAST OF ENGLAND	£ Range	£ Typical
Facilities Director	62,000-83,000	74,000
Facilities Manager	34,000-55,000	46,000
Facilities Assistant	21,000-27,000	25,000
Technical Services Manager	42,000-55,000	45,000
Technical Services Supervisor	33,000-42,000	39,000
Contract Manager	35,000-50,000	48,000
Electrical/Mechanical Engineer	30,000-40,000	38,000

EAST MIDLANDS	£ Range	£ Typical
Facilities Director	75,000-100,000	82,000
Facilities Manager	43,000-65,000	55,000
Facilities Assistant	25,000-38,000	30,000
Technical Services Manager	52,000-62,000	60,000
Technical Services Supervisor	38,000-47,000	45,000
Contract Manager	55,000-65,000	60,000
Electrical/Mechanical Engineer	35,000-45,000	40,000

NORTHERN IRELAND	£ Range	£ Typical
Facilities Director	60,000-75,000	63,000
Facilities Manager	40,000-60,000	50,000
Facilities Assistant	22,000-29,000	23,500
Technical Services Manager	36,000-45,000	42,000
Technical Services Supervisor	32,000-38,000	36,000
Contract Manager	40,000-50,000	42,000
Electrical/Mechanical Engineer	35,000-40,000	36,000

SOUTH WEST ENGLAND	£ Range	£ Typical
Facilities Director	72,000-76,000	74,000
Facilities Manager	40,000-45,000	45,000
Facilities Assistant	23,000-28,000	24,000
Technical Services Manager	38,000-45,000	40,000
Technical Services Supervisor	33,000-40,000	35,000
Contract Manager	45,000-50,000	45,000
Electrical/Mechanical Engineer	34,000-40,000	37,000

YORKSHIRE AND THE HUMBER	£ Range	£ Typical
Facilities Director	55,000-76,000	68,000
Facilities Manager	34,000-45,000	41,000
Facilities Assistant	22,000-26,000	25,000
Technical Services Manager	40,000-44,000	44,000
Technical Services Supervisor	36,000-38,000	37,000
Contract Manager	40,000-50,000	48,500
Electrical/Mechanical Engineer	30,000-40,000	40,000

SCOTLAND	£ Range	£ Typical
Facilities Director	56,000-66,000	63,500
Facilities Manager	35,000-45,000	42,000
Facilities Assistant	25,000-29,000	26,500
Technical Services Manager	37,000-45,000	43,500
Technical Services Supervisor	32,000-39,000	37,000
Contract Manager	40,000-50,000	46,500
Electrical/Mechanical Engineer	30,000-40,000	37,000

BUILDING SERVICES

Consulting

LONDON	£ Range	£ Typical
Director	90,000-140,000	110,000
Associate	70,000-85,000	82,000
Senior Design Engineer (M&E)	50,000-70,000	60,000
Intermediate Design Engineer (M&E)	40,000-50,000	45,000
Junior Design Engineer (M&E)	30,000-38,000	35,000
Revit/BIM Technician	40,000-65,000	55,000
CAD Technician	32,000-45,000	38,000
Professional Quantity Surveyor	55,000-90,000	75,000
Sustainability Consultant	45,000-75,000	60,000

SOUTH EAST ENGLAND	£ Range	£ Typical
Director	75,000-85,000	82,000
Associate	65,000-75,000	72,000
Senior Design Engineer (M&E)	55,000-63,000	58,000
Intermediate Design Engineer (M&E)	35,000-40,000	39,000
Junior Design Engineer (M&E)	25,000-33,000	32,500
Revit/BIM Technician	44,000-56,000	50,000
CAD Technician	31,000-36,000	34,000
Professional Quantity Surveyor	63,000-80,000	75,000
Sustainability Consultant	43,000-48,000	46,500

EAST OF ENGLAND	£ Range	£ Typical
Director	70,000-90,000	85,000
Associate	55,000-70,000	65,000
Senior Design Engineer (M&E)	48,000-62,000	55,000
Intermediate Design Engineer (M&E)	38,000-51,000	47,000
Junior Design Engineer (M&E)	23,000-32,000	29,000
Revit/BIM Technician	32,000-49,000	43,000
CAD Technician	29,000-40,000	35,000
Professional Quantity Surveyor	55,000-65,000	60,000
Sustainability Consultant	43,000-62,000	54,000

SOUTH WEST ENGLAND	£ Range	£ Typical
Director	70,000-79,000	75,000
Associate	68,000-73,000	70,000
Senior Design Engineer (M&E)	51,000-58,000	55,000
Intermediate Design Engineer (M&E)	47,000-55,000	50,000
Junior Design Engineer (M&E)	31,000-38,000	35,000
Revit/BIM Technician	41,000-49,000	44,000
CAD Technician	30,000-38,000	33,000
Professional Quantity Surveyor	57,000-65,000	60,000
Sustainability Consultant	46,000-54,000	50,000

WALES	£ Range	£ Typical
Director	70,000-79,000	73,000
Associate	68,000-73,000	68,000
Senior Design Engineer (M&E)	51,000-58,000	53,000
Intermediate Design Engineer (M&E)	47,000-55,000	47,000
Junior Design Engineer (M&E)	31,000-38,000	34,000
Revit/BIM Technician	41,000-49,000	42,000
CAD Technician	30,000-38,000	31,000
Professional Quantity Surveyor	57,000-65,000	57,000
Sustainability Consultant	46,000-54,000	48,000

WEST MIDLANDS	£ Range	£ Typical
Director	65,000-85,000	82,000
Associate	60,000-75,000	72,000
Senior Design Engineer (M&E)	45,000-60,000	54,000
Intermediate Design Engineer (M&E)	32,000-41,000	40,000
Junior Design Engineer (M&E)	26,000-32,000	31,000
Revit/BIM Technician	35,000-45,000	42,000
CAD Technician	26,000-35,000	32,000
Professional Quantity Surveyor	45,000-60,000	55,000
Sustainability Consultant	42,000-55,000	50,000

EAST MIDLANDS	£ Range	£ Typical
Director	70,000-85,000	80,000
Associate	60,000-75,000	70,000
Senior Design Engineer (M&E)	45,000-58,000	55,000
Intermediate Design Engineer (M&E)	32,000-40,000	40,000
Junior Design Engineer (M&E)	26,000-32,000	30,000
Revit/BIM Technician	35,000-45,000	40,000
CAD Technician	26,000-35,000	30,000
Professional Quantity Surveyor	50,000-60,000	55,000
Sustainability Consultant	42,000-55,000	48,000

YORKSHIRE AND THE HUMBER	£ Range	£ Typical
Director	70,000-80,000	75,000
Associate	49,000-65,000	62,000
Senior Design Engineer (M&E)	40,000-50,000	49,000
Intermediate Design Engineer (M&E)	30,000-40,000	32,000
Junior Design Engineer (M&E)	20,000-30,000	28,000
Revit/BIM Technician	31,000-44,000	40,000
CAD Technician	22,000-32,000	30,000
Professional Quantity Surveyor	40,000-55,000	52,000
Sustainability Consultant	45,000-55,000	50,000

NORTH EAST ENGLAND	£ Range	£ Typical
Director	46,000-59,000	57,000
Associate	43,000-52,000	50,000
Senior Design Engineer (M&E)	41,000-51,000	49,500
Intermediate Design Engineer (M&E)	28,000-38,000	33,500
Junior Design Engineer (M&E)	19,500-25,000	24,000
Revit/BIM Technician	31,000-41,000	39,500
CAD Technician	23,000-29,000	28,000
Professional Quantity Surveyor	38,000-48,000	46,000
Sustainability Consultant	38,000-48,000	46,000

NORTH WEST ENGLAND	£ Range	£ Typical
Director	70,000-80,000	75,000
Associate	60,000-72,000	68,000
Senior Design Engineer (M&E)	45,000-58,000	55,000
Intermediate Design Engineer (M&E)	30,000-40,000	35,000
Junior Design Engineer (M&E)	22,000-32,000	28,000
Revit/BIM Technician	35,000-45,000	42,000
CAD Technician	25,000-38,000	33,000
Professional Quantity Surveyor	40,000-58,000	50,000
Sustainability Consultant	30,000-60,000	50,000

NORTHERN IRELAND	£ Range	£ Typical
Director	70,000-80,000	75,000
Associate	60,000-70,000	65,000
Senior Design Engineer (M&E)	45,000-58,000	52,000
Intermediate Design Engineer (M&E)	32,000-40,000	36,000
Junior Design Engineer (M&E)	26,000-30,000	28,000
Revit/BIM Technician	34,000-40,000	38,000
CAD Technician	25,000-30,000	28,000
Professional Quantity Surveyor	45,000-55,000	48,000
Sustainability Consultant	45,000-55,000	50,000

SCOTLAND	£ Range	£ Typical
Director	62,000-87,000	73,000
Associate	57,000-67,000	62,500
Senior Design Engineer (M&E)	43,000-58,000	52,000
Intermediate Design Engineer (M&E)	33,000-46,000	39,500
Junior Design Engineer (M&E)	26,500-34,000	31,500
Revit/BIM Technician	26,000-42,000	37,000
CAD Technician	24,000-32,000	28,500
Professional Quantity Surveyor	37,000-52,000	42,500
Sustainability Consultant	38,000-53,000	48,000

BUILDING SERVICES

Contractors

LONDON	£ Range	£ Typical
Director	90,000-130,000	110,000
Senior Contracts Manager	70,000-95,000	80,000
Contract Quantity Surveyor	65,000-95,000	70,000
Project Manager	70,000-90,000	80,000
Project Engineer	60,000-75,000	65,000
Estimator	55,000-70,000	65,000
CAD Technician	40,000-60,000	50,000

WALES	£ Range	£ Typical
Director	68,000-77,000	73,000
Senior Contracts Manager	56,000-63,000	60,000
Contract Quantity Surveyor	50,000-62,000	53,000
Project Manager	45,000-55,000	45,000
Project Engineer	40,000-44,000	42,000
Estimator	45,000-60,000	48,000
CAD Technician	30,000-36,000	32,000

NORTH EAST ENGLAND	£ Range	£ Typical
Director	52,000-64,000	58,500
Senior Contracts Manager	39,000-51,000	48,000
Contract Quantity Surveyor	43,000-53,000	48,500
Project Manager	45,000-55,000	49,000
Project Engineer	33,000-43,000	38,500
Estimator	36,000-46,000	43,000
CAD Technician	23,500-29,500	29,000

SOUTH EAST ENGLAND	£ Range	£ Typical
Director	75,000-83,000	80,000
Senior Contracts Manager	70,000-77,000	75,000
Contract Quantity Surveyor	65,000-73,000	70,000
Project Manager	65,000-75,000	70,000
Project Engineer	50,000-56,000	55,000
Estimator	60,000-80,000	72,000
CAD Technician	37,000-45,000	43,000

WEST MIDLANDS	£ Range	£ Typical
Director	65,000-85,000	77,000
Senior Contracts Manager	52,000-70,000	62,000
Contract Quantity Surveyor	45,000-62,000	55,000
Project Manager	45,000-60,000	55,000
Project Engineer	33,000-48,000	44,000
Estimator	40,000-60,000	49,000
CAD Technician	26,000-34,000	32,000

NORTH WEST ENGLAND	£ Range	£ Typical
Director	70,000-80,000	80,000
Senior Contracts Manager	50,000-70,000	58,000
Contract Quantity Surveyor	42,000-58,000	57,000
Project Manager	40,000-55,000	52,000
Project Engineer	35,000-45,000	43,000
Estimator	38,000-45,000	44,000
CAD Technician	25,000-35,000	31,000

EAST OF ENGLAND	£ Range	£ Typical
Director	70,000-90,000	85,000
Senior Contracts Manager	60,000-75,000	71,000
Contract Quantity Surveyor	48,000-70,000	62,000
Project Manager	50,000-67,000	60,000
Project Engineer	48,000-60,000	54,000
Estimator	50,000-65,000	58,000
CAD Technician	28,000-35,000	31,000

EAST MIDLANDS	£ Range	£ Typical
Director	65,000-85,000	75,000
Senior Contracts Manager	52,000-65,000	60,000
Contract Quantity Surveyor	50,000-65,000	60,000
Project Manager	50,000-60,000	55,000
Project Engineer	38,000-45,000	42,000
Estimator	45,000-55,000	50,000
CAD Technician	27,000-35,000	33,000

NORTHERN IRELAND	£ Range	£ Typical
Director	80,000-90,000	85,000
Senior Contracts Manager	60,000-70,000	65,000
Contract Quantity Surveyor	55,000-65,000	60,000
Project Manager	45,000-52,000	48,000
Project Engineer	38,000-45,000	40,000
Estimator	45,000-55,000	50,000
CAD Technician	38,000-45,000	40,000

SOUTH WEST ENGLAND	£ Range	£ Typical
Director	70,000-80,000	75,000
Senior Contracts Manager	58,000-65,000	63,000
Contract Quantity Surveyor	56,000-64,000	58,000
Project Manager	52,000-57,000	54,000
Project Engineer	43,000-47,000	45,000
Estimator	50,000-60,000	53,000
CAD Technician	33,000-37,000	34,000

YORKSHIRE AND THE HUMBER	£ Range	£ Typical
Director	62,000-68,000	63,000
Senior Contracts Manager	42,000-52,000	45,000
Contract Quantity Surveyor	42,000-52,000	46,000
Project Manager	45,000-55,000	53,000
Project Engineer	36,000-46,000	39,500
Estimator	34,000-44,000	41,000
CAD Technician	24,000-29,500	28,500

SCOTLAND	£ Range	£ Typical
Director	54,000-68,000	64,000
Senior Contracts Manager	43,000-53,000	52,000
Contract Quantity Surveyor	40,000-50,000	48,500
Project Manager	35,000-55,000	49,500
Project Engineer	34,000-46,000	44,500
Estimator	37,500-47,000	46,000
CAD Technician	23,500-28,000	26,500

SOCIAL HOUSING

LONDON	£ Range	£ Typical
Area Housing Manager	48,000-55,000	52,000
Housing Manager	45,000-48,000	46,000
Senior Housing Officer	36,000-40,000	38,000
Housing Officer	33,000-38,000	35,000
Housing Assistant	25,000-29,000	28,000
Resident Involvement Manager	40,000-44,000	42,000
Anti-Social Behaviour/ Community Safety Officer	35,000-42,000	37,000
Income Recovery Officer	32,000-35,000	33,000
Team Manager Supported Housing	32,000-36,000	34,000
Support/Project Worker	23,000-25,000	24,000
Scheme Manager	22,000-25,000	24,000

SOUTH EAST ENGLAND	£ Range	£ Typical
Area Housing Manager	42,000-46,000	44,000
Housing Manager	37,500-42,000	41,000
Senior Housing Officer	31,000-34,000	32,500
Housing Officer	28,000-32,000	29,000
Housing Assistant	21,000-23,000	21,000
Resident Involvement Manager	38,000-42,000	39,000
Anti-Social Behaviour/ Community Safety Officer	29,000-32,000	30,000
Income Recovery Officer	31,000-35,000	32,000
Team Manager Supported Housing	31,000-35,000	32,500
Support/Project Worker	22,000-24,000	22,000
Scheme Manager	23,000-25,000	23,500

EAST OF ENGLAND	£ Range	£ Typical
Area Housing Manager	40,000-42,000	41,500
Housing Manager	36,000-40,000	39,000
Senior Housing Officer	31,000-34,000	34,000
Housing Officer	27,000-32,000	28,750
Housing Assistant	21,000-23,000	22,000
Resident Involvement Manager	37,000-40,000	39,000
Anti-Social Behaviour/ Community Safety Officer	25,000-29,000	28,000
Income Recovery Officer	25,000-30,000	28,500
Team Manager Supported Housing	31,000-35,000	34,000
Support/Project Worker	21,000-23,000	22,500
Scheme Manager	23,000-25,000	25,000

SOUTH WEST ENGLAND	£ Range	£ Typical
Area Housing Manager	40,000-45,000	42,000
Housing Manager	35,000-40,000	38,000
Senior Housing Officer	32,000-35,000	33,000
Housing Officer	28,000-32,000	32,000
Housing Assistant	24,000-26,000	24,000
Resident Involvement Manager	26,000-35,000	29,000
Anti-Social Behaviour/ Community Safety Officer	29,000-33,000	30,000
Income Recovery Officer	30,000-35,000	32,000
Team Manager Supported Housing	30,000-32,000	30,000
Support/Project Worker	22,000-24,000	23,000
Scheme Manager	24,000-26,000	25,000

WALES	£ Range	£ Typical
Area Housing Manager	40,000-45,000	42,000
Housing Manager	35,000-40,000	38,000
Senior Housing Officer	32,000-35,000	33,000
Housing Officer	28,000-32,000	32,000
Housing Assistant	24,000-26,000	24,000
Resident Involvement Manager	26,000-35,000	29,000
Anti-Social Behaviour/ Community Safety Officer	29,000-33,000	30,000
Income Recovery Officer	30,000-35,000	32,000
Team Manager Supported Housing	30,000-32,000	30,000
Support/Project Worker	22,000-24,000	23,000
Scheme Manager	24,000-26,000	25,000

WEST MIDLANDS	£ Range	£ Typical
Area Housing Manager	42,000-55,000	49,000
Housing Manager	38,000-50,000	44,000
Senior Housing Officer	34,000-36,000	35,000
Housing Officer	29,000-33,000	31,000
Housing Assistant	22,000-25,000	23,500
Resident Involvement Manager	33,000-36,000	34,500
Anti-Social Behaviour/ Community Safety Officer	29,000-33,000	32,000
Income Recovery Officer	27,000-31,000	28,500
Team Manager Supported Housing	29,000-34,000	31,500
Support/Project Worker	22,000-24,500	23,500
Scheme Manager	24,000-28,000	26,000

EAST MIDLANDS	£ Range	£ Typical
Area Housing Manager	42,000-55,000	49,000
Housing Manager	35,000-50,000	44,000
Senior Housing Officer	28,000-35,000	33,000
Housing Officer	26,000-31,000	29,000
Housing Assistant	21,000-25,000	23,000
Resident Involvement Manager	31,000-36,000	34,500
Anti-Social Behaviour/ Community Safety Officer	27,000-33,000	30,000
Income Recovery Officer	27,000-35,000	31,000
Team Manager Supported Housing	28,000-32,000	30,000
Support/Project Worker	21,000-27,000	24,000
Scheme Manager	23,000-27,000	25,500

YORKSHIRE AND THE HUMBER	£ Range	£ Typical
Area Housing Manager	33,000-40,000	37,000
Housing Manager	31,000-37,000	34,000
Senior Housing Officer	30,000-35,000	32,000
Housing Officer	23,000-28,000	25,500
Housing Assistant	21,000-24,000	21,000
Resident Involvement Manager	32,000-35,000	32,000
Anti-Social Behaviour/ Community Safety Officer	27,000-32,000	29,000
Income Recovery Officer	28,000-33,000	31,000
Team Manager Supported Housing	32,000-36,000	34,000
Support/Project Worker	21,000-25,000	23,000
Scheme Manager	21,000-25,000	21,000

NORTH EAST ENGLAND	£ Range	£ Typical
Area Housing Manager	36,000-42,000	39,000
Housing Manager	31,000-37,000	35,000
Senior Housing Officer	30,000-35,000	31,000
Housing Officer	26,000-31,000	28,000
Housing Assistant	21,000-24,000	22,000
Resident Involvement Manager	32,000-35,000	33,500
Anti-Social Behaviour/ Community Safety Officer	27,000-32,000	30,000
Income Recovery Officer	28,000-33,000	29,000
Team Manager Supported Housing	32,000-36,000	33,000
Support/Project Worker	21,000-25,000	22,000
Scheme Manager	21,000-25,000	22,000

NORTH WEST ENGLAND	£ Range	£ Typical
Area Housing Manager	37,000-49,000	43,000
Housing Manager	38,000-42,000	40,000
Senior Housing Officer	32,000-37,000	35,000
Housing Officer	29,500-34,000	32,000
Housing Assistant	21,600-25,000	23,000
Resident Involvement Manager	31,000-35,000	33,000
Anti-Social Behaviour/ Community Safety Officer	31,000-37,000	32,500
Income Recovery Officer	30,000-33,000	32,500
Team Manager Supported Housing	32,000-36,000	34,500
Support/Project Worker	22,000-27,000	23,500
Scheme Manager	23,000-27,000	25,000

NORTHERN IRELAND	£ Range	£ Typical
Area Housing Manager	39,000-43,000	41,000
Housing Manager	33,000-42,000	39,000
Senior Housing Officer	30,000-35,000	33,000
Housing Officer	26,000-31,000	28,000
Housing Assistant	21,000-24,000	21,000
Resident Involvement Manager	22,000-35,000	28,000
Anti-Social Behaviour/ Community Safety Officer	27,000-29,000	28,000
Income Recovery Officer	27,000-30,000	28,000
Team Manager Supported Housing	32,000-36,000	32,500
Support/Project Worker	21,000-25,000	22,000
Scheme Manager	21,000-25,000	23,000

SCOTLAND	£ Range	£ Typical
Area Housing Manager	40,000-46,000	43,000
Housing Manager	36,000-43,000	40,000
Senior Housing Officer	30,000-35,000	33,000
Housing Officer	27,000-33,000	29,000
Housing Assistant	23,000-27,000	25,000
Resident Involvement Manager	29,000-35,000	33,000
Anti-Social Behaviour/ Community Safety Officer	27,000-30,000	28,500
Income Recovery Officer	26,500-32,000	29,000
Team Manager Supported Housing	30,000-36,000	33,000
Support/Project Worker	21,000-25,000	23,000
Scheme Manager	21,000-25,000	23,000